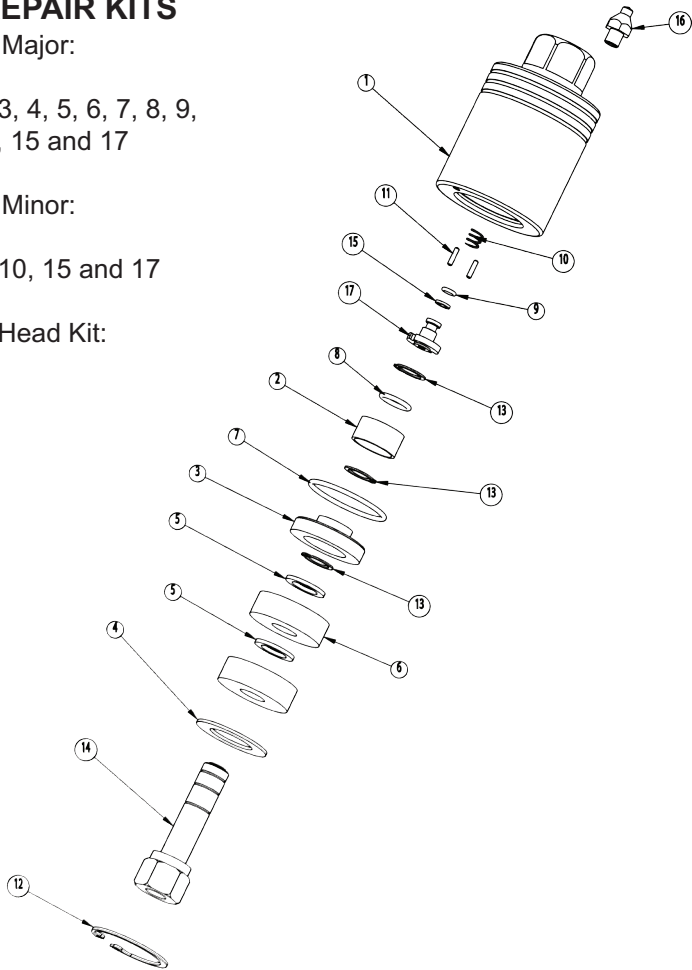


AVAILABLE REPAIR KITS

Rotary Head Kit - Major:  
P/N 2100202  
Includes items 2, 3, 4, 5, 6, 7, 8, 9,  
10, 11, 12, 13, 14, 15 and 17

Rotary Head Kit - Minor:  
P/N 2100203  
Includes items 9, 10, 15 and 17

Complete Rotary Head Kit:  
P/N 2103000  
Includes all items

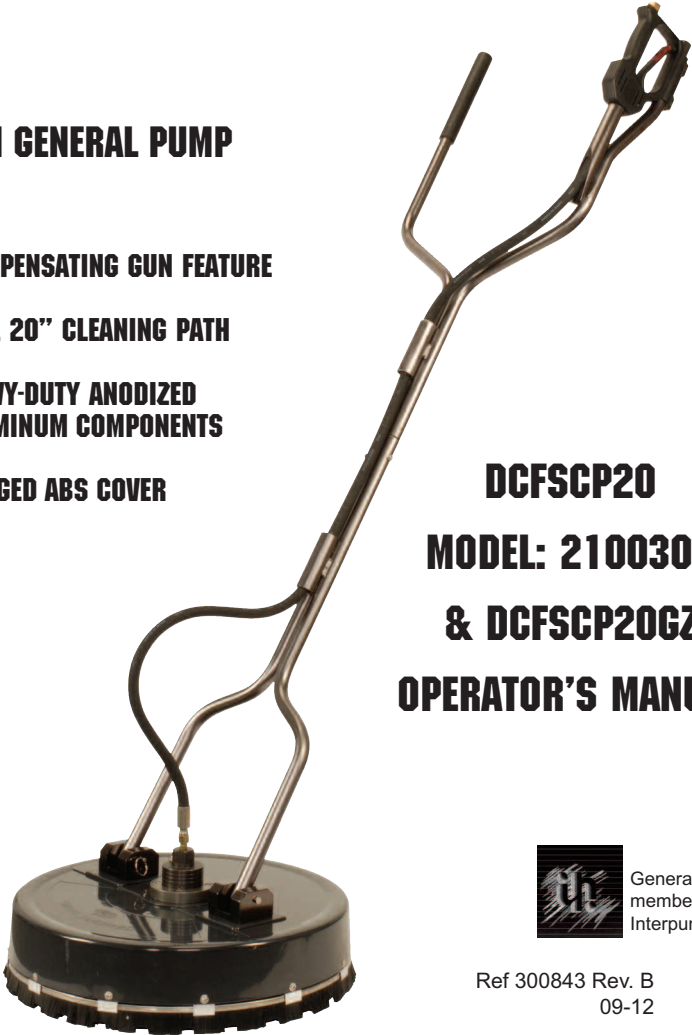




# PROFESSIONAL FLAT SURFACE CLEANER

FROM GENERAL PUMP

- COMPENSATING GUN FEATURE
- FULL 20" CLEANING PATH
- HEAVY-DUTY ANODIZED ALUMINUM COMPONENTS
- RUGGED ABS COVER



**DCFSCP20**  
**MODEL: 2100303**  
**& DCFSCP20GZ**  
**OPERATOR'S MANUAL**

ITEM NO.	PART NO.	DESCRIPTION	QTY.
1	2510017	Housing, Swivel	1
2	2520030	Retainer, Bearing	1
3	2520028	Retainer, Bearing	1
4	2520031	Washer, Bearing Retainer	1
5	2520027	Spacer, Bearing	2
6	2640004	Bearing, 15 x 42	2
7	2701012	O-ring	1
8	2701011	O-ring	1
9	2701010	O-ring	1
10	2720007	Spring, Compression	1
11	2530008	Pin	2
12	2200037	Snap Ring	1
13	2520029	Snap Ring	3
14	2200038	Stem, Swivel	1
15	2710000	Back-up Ring	1
16	2640012	Zerk , Grease	1
17	2530007	Stem, Small	1

**WARNING: Read Before Operating Machine**  
Always wear protective eyewear  
Keep clear of rotating nozzles  
Never lock trigger gun open with any device  
Drain water in cold weather to avoid freezing  
Tampering with any part of this machine will void all warranties



General Pump is a member of the Interpump Group

Ref 300843 Rev. B  
09-12



## Operating Instructions

1. Connect to Pressure Washer.
2. Turn water on and open valve. Open trigger gun for flow of water through nozzles. Nozzles must have flowing spray. If not, remove tips and clean; reassemble, making sure that groove of nozzle is parallel to spray bar. Use thread sealant when installing nozzles.
3. Start Pressure Washer. The Hammerhead is ready for operation.
4. Walk slowly behind the Hammerhead cleaning as you go. If striping occurs, slow down your pace.
5. Periodically check weep hole on bottom of swivel. Water will seep slowly; if water shoots out, stop and replace seals. Swivel assembly can be rebuilt.
6. For maximum effectiveness keep spray tips clean. If the machine vibrates, stop and clean spray tips.
7. Grease the swivel with one or two grease gun pumps every 200 hours (or once about every 30 days of use).

**DO NOT ALLOW MACHINE TO REMAIN STATIONARY ON SOFT SURFACES SUCH AS WOOD.**

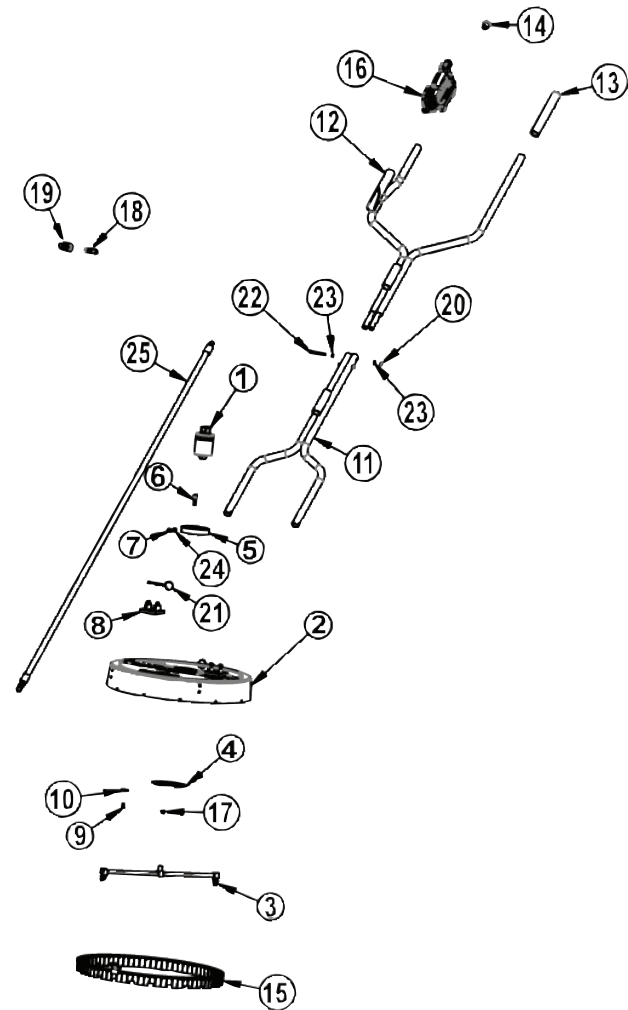
Caution: Striking any raised obstacle during operation will damage machine. If contact does occur and results in vibration when operating machine, STOP and replace spray bar. Continued operation could result in serious injury or damage to machine.

Operating Pressures: 1,000 to 4,000 PSI  
Max Flow: 8.0 GPM  
Dimensions: 70" x 21" x 21"  
Weight: 21 lbs.

### General Pump

1174 Northland Drive • Mendota Heights, MN 55120  
Phone: 651.686.2199 • Fax: 800.535.1745  
www.generalpump.com • sales@gpcompanies.com

Ref 300843 Rev. B  
09-12



ITEM NO.	PART NO.	DESCRIPTION	QTY.
1	2103000	Swivel	1
2	2660045	Deck, GP, 20"	1
3	2530009	Arm, Rotary, Assy., 20"	1
4	2630010	Plate, Retaining	1
5	2540023	Collar, Split	1
6	2200055	SHCS, M8	4
7	2200054	SHCS, M8	1
8	2540020	Block, Handle	2
9	2200047	Bolt, M6	8
10	2203406	Washer, M6	8
11	2540021	Handle, Lower	1
12	2540022	Handle, Upper	1

ITEM NO.	PART NO.	DESCRIPTION	QTY.
13	2660047	Grip, Handle	1
14	2660046	Plug, Handle	1
15	2660059	Brush Assy., 20"	1
16	DCG4000FSC	Gun, Flat Surface Cleaner	1
17	2200053	Nut, M8 x 1.25	4
18	D10009	Plug	1
19	D10004	Coupler, 3/8 x 3/8-M	1
20	2200026	Nut, M6, Nylok	2
21	2202010	Pin, 55mm, w/Ring, SST	2
22	2200058	HHCS	2
23	2200018	Washer, M6	4
24	2203507	Washer	1
25	2702000	Hose, FSC, 20"	1